

NCAA Women's Bowling Head Official

Preparing the Lanes for Fair Play



Is the facility ready for play?

Perform overview of the facility (basic items):

- Normal facility requirements for competition
 - Is the facility a United States Bowling Congress (USBC) certified facility?
 - If not USBC certified, have all teams been notified of this prior to travel for the competition (not required unless it is a postseason event – encouraged)
 - If not, do all teams agree to use the facility “as is”?
- Safety Concerns (must be resolved before play occurs)
 - Defined playing areas
 - Defined spectator areas
 - Obvious physical obstructions that would hinder play
- Equipment Functions Properly
 - Pinsetters (and on-site facility attendant to repair mechanical problems)
 - Foul lights working (or foul line official present)
 - Scoring system (automated scoring is preferred, but manual scoring may be used if necessary)



Is the facility ready for play? (continued)

Additional items to look for during your review of the facility:

- Is there storage space for bowling equipment?
- Are there seating areas for officials?
- Does other equipment work properly?



Are the lanes ready for play?

Completion of a lane certification process needs to be executed before any warm-up or practice sessions begin.

Items needed to “certify” lanes for an NCAA event:

- A copy of lane maintenance pattern information to reference during the process
- One 50-foot or longer tape measure
- One dry hand towel

Note: A stop watch or portable clock will also be needed during the event.



Lane Certification

Perform an overview of the lanes for verification:

- **Normal facility requirements for play**
 - When did the facility staff dress the lanes (last night or the morning of the event?)
 - Verify the type of lane machine that is being used.
- **Lane pattern verification (from Event Certification Form)**
 - Pattern distance = between 34 – 44 feet.
 - Pattern oil ratio = between 2.0:1 – 4.0:1 (between 2.5:1 – 3.5:1 preferred)
 - Pattern volume = between 20 – 25 mL
- **Secondary competition area items to review**
 - Warm-up area preparation
 - Additional lanes not being used for competition
 - Defined separation of competition area and spectator areas



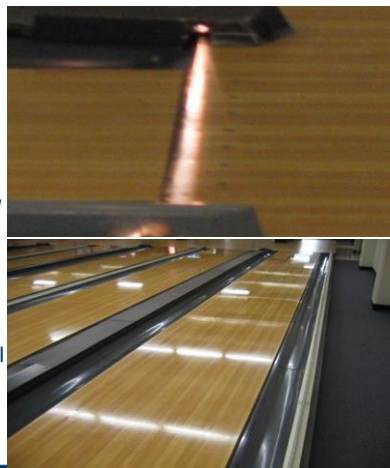
Lane Certification (continued)

Visually inspect lanes:

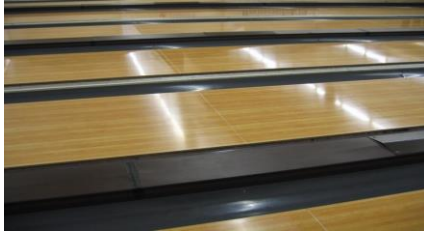
- Foul lights are ON for all lanes.
- No deformities in lane surface or approach
- Clean playing surface (no dirt, tacky or slick areas)
- Look to ensure all lanes have been conditioned:
 - *Go to the other end of the lane near the pins – approximately half way down the lane, start looking for a line which identifies where oil/conditioner application was stopped – area with oil will look shiny; areas without oil will have a dull, fuzzy or hazy appearance – this is the end of the pattern.*
 - *Do all lanes look the same regarding pattern distance?*

Check pattern length:

- Tape measure to be used
- Measure from foul line to end of pattern length (final distance, no oil run)
- Verify length of pattern = between 34' and 44'



Lane Certification (continued)

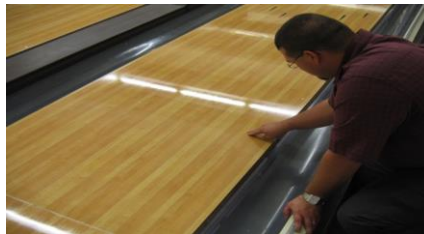


Lane Certification (continued)

Check oil application:

- Complete finger smear test.
 - Check at three distances
 - Arrows (15 ft.)
 - 5 – 10 ft. from oil line
 - Final pattern distance
- Was oil (conditioner) present on all boards from the gutter to center of the lane? (Yes or No)

(Note: Even light amounts of oil are okay)



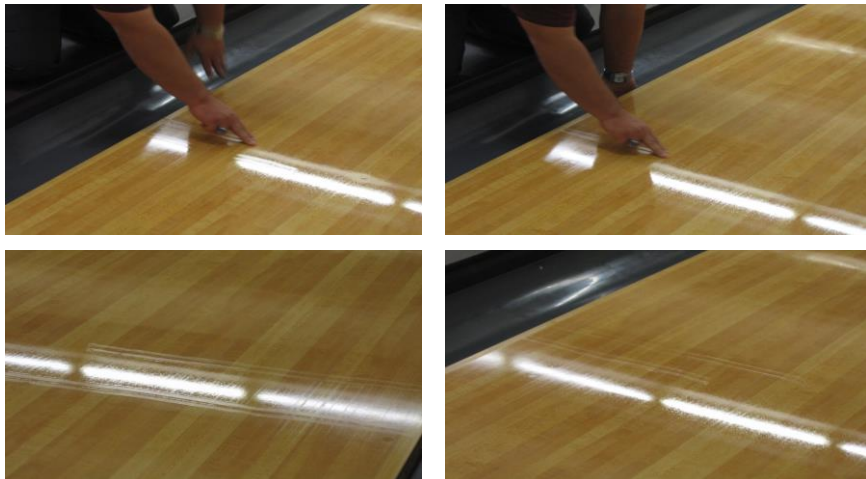
Lane Certification (continued)

Check oil application on all boards:

- **Complete a basic finger smear test.**
 - **Step 1:** Kneel down besides the lane near the gutter. Put your middle finger and index finger together and touch the lane with fingertips (DO NOT step out onto the lane to complete Step 2 – lean out over the lane area).
 - **Step 2:** Put fingers on the lane at the board closest to the gutter (#1 board); lightly push your fingers across the boards of the lane toward the middle of the lane (#20 board) to see if oil / conditioner is applied. Applied oil / conditioner will be wet or slick to the touch. Dry areas will be dull, squeaky and fingers will move slower.
 - **Step 3:** Check opposite side of the lane, same distance (wipe off fingers before the next test).
 - Check at three distances – Always do the test from board #1 to #20, never opposite
 - At the arrows (15 ft.)
 - At 5 – 10 ft. from oil line (between arrows and oil line)
 - At the final pattern distance
- **Was oil/conditioner present on all boards from the gutter to the center of lane? (Yes or No)**
- **Use your eyes to look at the area where fingers pushed across the lane – the area where oil/conditioner is applied will show very light to very noticeable.**
- **Even very light amounts of oil are okay and will present a smeared look; dry boards will not show any smearing or residue.**



Lane Certification (continued)



Lane Certification (final)

- If everything is satisfactory, the head official may sign off on the facility being ready for use.

- ****No** additional verification (e.g., taping of the lanes) is needed to confirm match pattern information unless desired by the conference office (or arrangements made by the event manager).

